

# Dialogo d'amore

The musical score for 'Dialogo d'amore' is written in treble clef with a key signature of one flat (Bb) and a common time signature (C). It consists of six staves of music. The first staff begins with a first ending bracket labeled 'A' above it. The second staff contains a first ending bracket. The fourth staff contains two first ending brackets labeled '1' and '2' above them. The fifth and sixth staves are in a different key signature, one sharp (F#).

Chord progressions for the first four staves:

- Staff 1: Gmin, Gm7+, Gmin7, Gmin6, Cmin7
- Staff 2: D7, Gmin
- Staff 3: Cmin, Gmin, A7
- Staff 4: D7, Eb7, D7, D, DMaj7, D7, D+, G

Chord progressions for the last two staves:

- Staff 5: Amin, D7, G
- Staff 6: Amin, D7



G C Cmin G



E7 Amin Amin7 D7 D DMaj 7 D7 G



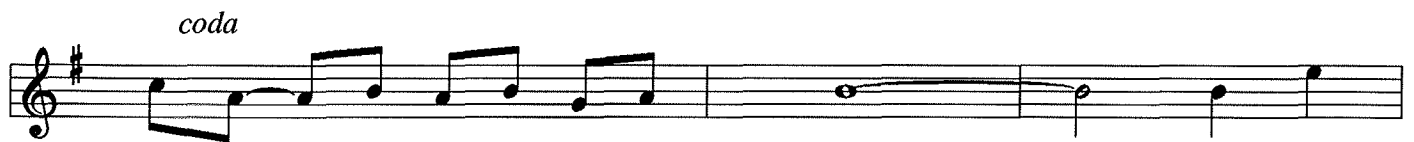
Amin F#m7(b5) B7#5 B7



Emin7 E7 C A7/C# G/D G E7 Amin



D7 G



D7 Bm7(b5) E7



Amin D7 AbMaj 7 Fmin7 DbMaj 7 GMaj 7